

Liquid measurement with *Oval gear meters*

Pointer-type register

Pointer-type registers serve for displaying the volume measured by the oval gear measuring mechanism. The volume can be read by the rotating pointer on the fixed scale. The 7-digit non-resettable totalizer registers all measured volumes. Two versions are available: The single-pointer indicator Z, where the pointers are not resettable, and the double-pointer indicator ZR, where both pointers can be reset. The scale unit depends on the nominal diameter and the transfer module G10 that is used. All parameters relevant for measurement, the year of manufacture and the type are shown on the scale. A combination with the vemmtec pulse generator is possible.



Fig. 1) Double-pointer indicator ZR

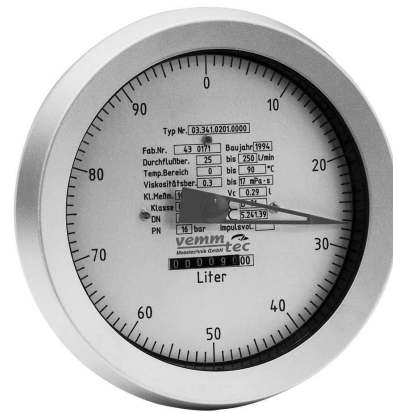


Fig. 2) Single-pointer indicator Z

Volume values

| | Register | without G10 | | | with G10 | | |
|-------------------------|----------|------------------|------------|-------------|------------|-------------|-------------------------|
| | | Nominal diameter | | | | | |
| | | DN 15 - 32 | DN 40 - 65 | DN 80 - 100 | DN 15 - 32 | DN 40 - 65 | DN 80 - 100 |
| Minimum readable volume | Z | 0,01 ℓ | 0,1 ℓ | 1 ℓ | 0,1 ℓ | 1 ℓ | 10 ℓ |
| Minimum readable volume | ZR | | 0,1 ℓ | 1 ℓ | 0,1 ℓ | 1 ℓ | 10 ℓ |
| Minimum volume | Z | 1 ℓ | 10 ℓ | 100 ℓ | 10 ℓ | 100 ℓ | 1 m ³ |
| Minimum volume | ZR | | 10 ℓ | 100 ℓ | 10 ℓ | 100 ℓ | 1 m ³ |
| Scale division | Z | 0 - 1 ℓ | 0 - 10 ℓ | 0 - 100 ℓ | 0 - 10 ℓ | 0 - 100 ℓ | 0 - 1 m ³ |
| Scale division | ZR | | 0 - 10 ℓ | 0 - 100 ℓ | 0 - 10 ℓ | 0 - 100 ℓ | 0 - 1 m ³ |
| Big pointer | | | 0 - 500 ℓ | 0 - 5000 ℓ | 0 - 500 ℓ | 0 - 5000 ℓ | 0 - 50 m ³ |
| Small pointer | | | | | | | |
| Counting capacity | Z | 1 ℓ | 10 ℓ | 100 ℓ | 10 ℓ | 100 ℓ | 1 m ³ |
| Pointer | | 9999999 ℓ | 99999990 ℓ | 999999900 ℓ | 99999990 ℓ | 999999900 ℓ | 9999999 m ³ |
| Totalizer | | | | | | | |
| Counting capacity | ZR | | 499,9 ℓ | 4999 ℓ | 499,9 ℓ | 4999 ℓ | 49,99 m ³ |
| Pointer | | | 9999999 ℓ | 99999990 ℓ | 9999999 ℓ | 99999990 ℓ | 999999,9 m ³ |
| Totalizer | | | | | | | |